

VIKIMATIC STEEL PIPE

**Part Number Ordering Matrix
Begins On Page 90**

B.T.C. - Black Threaded & Coupled. **G.T.C.** - Galvanized Threaded & Coupled.

WEIGHT TABLE OF ELECTRICAL RESISTANCE WELDED (ERW) STEEL PIPE

Nominal Size in	Outside Diameter		Wall Thickness		Nominal Weight						Weight Class	Sch. No.
	in	mm	in	mm	Plain Ends			Threads & Couplings				
					lb/ft	kg/ft	kg/m	lb/ft	kg/ft	kg/m		
1/2	0.840	21.3	0.109	2.77	0.85	0.39	1.27	0.85	0.39	1.27	STD	40
			0.147	3.73	1.09	0.49	1.62	1.09	0.49	1.62	XS	80
3/4	1.050	26.7	0.113	2.87	1.13	0.51	1.69	1.13	0.51	1.68	STD	40
			0.154	3.91	1.47	0.67	2.20	1.48	0.67	2.20	XS	80
1	1.315	33.4	0.133	3.38	1.68	0.76	2.50	1.68	0.76	2.50	STD	40
			0.179	4.55	2.17	0.98	3.24	2.18	0.99	3.24	XS	80
1-1/4	1.660	42.2	0.140	3.56	2.27	1.03	3.39	2.28	1.03	3.39	STD	40
			0.191	4.85	3.00	1.36	4.47	3.02	1.37	4.49	XS	80
1-1/2	1.900	48.3	0.145	3.68	2.72	1.23	4.05	2.73	1.24	4.06	STD	40
			0.200	5.08	3.63	1.65	5.41	3.66	1.66	5.45	XS	80
2	2.375	60.3	0.154	3.91	3.65	1.66	5.44	3.68	1.67	5.48	STD	40
			0.218	5.54	5.02	2.28	7.48	5.07	2.30	7.55	XS	80
2-1/2	2.875	73.0	0.203	5.16	5.79	2.63	8.63	5.82	2.64	8.66	STD	40
			0.276	7.01	7.66	3.47	11.41	7.73	3.51	11.50	XS	80
3	3.500	88.9	0.216	5.49	7.58	3.44	11.29	7.62	3.46	11.34	STD	40
			0.300	7.62	10.25	4.65	15.27	10.33	4.69	15.37	XS	80
3-1/2	4.000	101.6	0.226	5.74	9.11	4.13	13.57	9.20	4.17	13.69	STD	40
			0.318	8.08	12.50	5.67	18.63	12.63	5.73	18.80	XS	80
4	4.500	114.3	0.188	4.78	8.66	3.93	12.91	-	-	-	-	-
			0.237	6.02	10.79	4.89	16.07	10.98	4.94	16.21	STD	40
			0.337	8.56	14.98	6.80	22.32	15.17	6.88	22.58	XS	80
5	5.563	141.3	0.188	4.78	10.79	4.89	16.07	-	-	-	-	-
			0.258	6.55	14.62	6.63	21.77	14.81	6.72	22.04	STD	40
			0.375	9.53	20.78	9.43	30.97	21.09	9.57	31.39	XS	80
			0.500	12.70	27.04	12.27	40.20	-	-	-	-	-
6	6.625	168.3	0.188	4.78	12.92	5.86	19.27	-	-	-	-	-
			0.250	6.35	17.02	7.72	25.36	-	-	-	-	-
			0.280	7.11	18.97	8.60	28.26	19.18	8.70	28.54	STD	40
			0.432	10.97	28.57	12.96	42.56	28.89	13.10	42.99	XS	80
8	8.625	219.1	0.188	4.78	16.94	7.68	25.26	-	-	-	-	-
			0.250	6.35	22.36	10.14	33.31	-	-	-	-	20
			0.277	7.04	24.70	11.20	36.81	25.55	11.59	38.02	-	30
			0.322	8.18	28.55	12.95	42.55	29.35	13.31	43.68	STD	40
			0.406	10.31	35.64	16.17	53.08	-	-	-	-	60
			0.500	12.70	43.36	19.68	64.64	43.90	19.91	65.33	XS	80
10	10.750	273.1	0.188	4.78	21.21	9.62	31.63	-	-	-	-	-
			0.219	5.56	24.63	11.17	36.68	-	-	-	-	-
			0.250	6.35	28.04	12.72	41.77	-	-	-	-	20
			0.279	7.09	31.20	14.15	46.51	32.75	14.86	48.74	-	-
			0.365	9.27	40.48	18.36	60.31	41.85	18.98	62.28	STD	40
0.500	12.70	54.74	24.83	81.55	55.82	25.32	83.07	XS	60			
12	12.750	323.9	0.219	5.56	29.31	13.29	43.65	-	-	-	-	-
			0.250	6.35	33.38	15.14	49.73	-	-	-	-	20
			0.330	8.38	43.77	19.85	65.20	45.45	20.62	67.64	-	30
			0.375	9.53	49.56	22.48	73.88	51.15	23.20	76.12	STD	-
			0.406	10.31	53.52	24.28	79.73	-	-	-	-	40
			0.500	12.70	65.42	29.67	97.46	66.71	30.26	99.28	XS	-

It is purchaser's responsibility to inspect all material delivered at time of delivery. The seller makes no warranty, expressed or implied, that the material is fit for any particular purpose whatsoever unless specifically written in detail.

STEEL PIPE EXPANSION FITTINGS

TYPE AX

Weatherproof with internal bonding assembly. Provides 4" conduit movement.

TYPE AX8

Weatherproof with internal bonding assembly. Provides 8" conduit movement.

USE:

To allow for expansion and contraction in a run of rigid metal conduit. For rigid metal conduit only. For applications involving IMC a 15" min. length of rigid conduit should be used entering the expansion fitting due to the slightly smaller O.D. of the IMC. Type AX provides for a maximum of 4" conduit movement (2" in either direction). Type AX8 provides for a maximum of 8" conduit movement (4" in either direction).

Features

- These Type AX and Type AX8 Expansion Fittings have been listed by Underwriters' Laboratories, Inc. for use without bonding jumpers in indoor locations and with external bonding jumpers in outdoor locations.
- Includes insulating bushing.
- Bonding Jumpers.

STANDARD MATERIAL:

- Malleable Iron

OPTIONAL MATERIAL:

- Available in Aluminum

STANDARD FINISH:

- Hot Dip Galvanized

STANDARD SIZES:

- 1/2" thru 5"

THIRD PARTY CERTIFICATION:



File No. E-11853

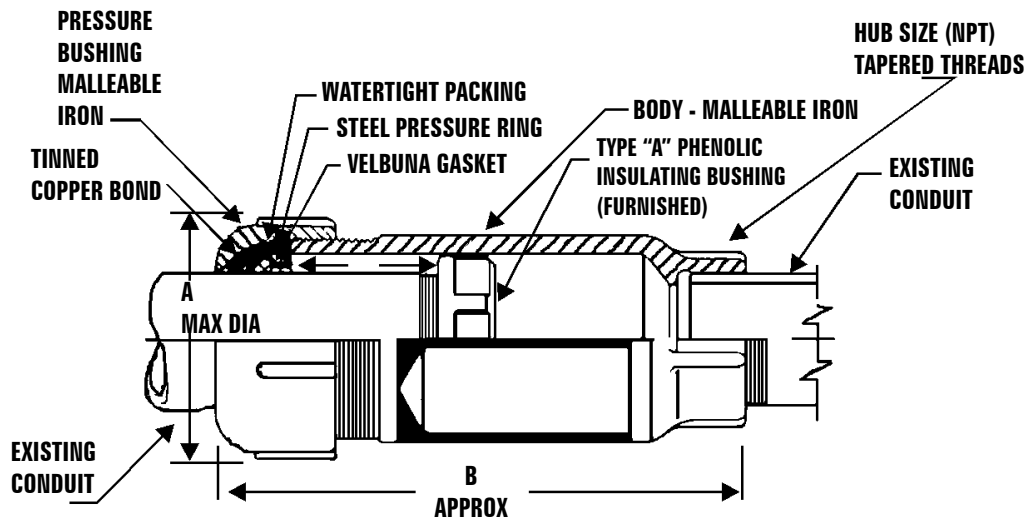


Certified File No. 11584

(when used with external Type BJ Bonding Jumper)

TO ORDER SPECIFY:

When bonding jumpers are required for steel conduit, specify by catalog numbers in table below. Type AX and Type AX8 Expansion Fittings are available in aluminum. Add letter "A" after catalog number (Example: AX-50A).



Type AX
Provides for 4" Conduit Movement

ORDERING INFORMATION

AX FITTING

Part Number	Trade Size Inches	Dim. in In.		Wt. Per. 100	Ctn.	Std. Pkg.
		A Max. Dia.	B Overall Length			
AX-50	1/2	2	6-1/4	170	5	25
AX-75	3/4	2	6-3/8	200	5	25
AX-100	1	2-5/8	6-5/8	280	2	10
AX-125	1-1/4	3-1/8	6-5/8	350	2	10
AX-150	1-1/2	3-1/2	6-5/8	500	2	10
AX-200	2	4	7-1/8	700	1	5
AX-250	2-1/2	4-1/2	7-1/2	800	1	5
AX-300	3	5-3/8	8-1/8	1100	-	4
AX-350	3-1/2	6	8-1/2	1450	-	4
AX-400	4	6-5/8	8-5/8	1850	-	4
AX-500	5	8	9-1/2	2550	-	2

BONDING JUMPER - 14"

Part Number	Wt. Per 100	Ctn.	Std. Pkg.
BJ-0507-14	65	10	50
BJ-1012-14	85	10	50
BJ-1520-14	123	5	25
BJ-2530-14	175	2	10
BJ-3540-14	237	2	10
BJ-5060-14	346	-	5

AX8 FITTING

Part Number	Trade Size Inches	Dim. in In.		Wt. Per. 100	Std. Pkg.
		A Max. Dia.	B Overall Length		
AX8-50	1/2	2	10-1/4	270	10
AX8-75	3/4	2-1/4	10-3/8	320	10
AX8-100	1	2-5/8	10-5/8	440	5
AX8-125	1-1/4	3-1/8	10-5/8	520	5
AX8-150	1-1/2	3-1/2	10-5/8	720	5
AX8-200	2	4	11-1/8	1030	2
AX8-250	2-1/2	4-1/2	11-1/2	1170	2
AX8-300	3	5-3/8	12-1/8	1550	2
AX8-350	3-1/2	6	12-1/4	1950	1
AX8-400	4	6-5/8	12-3/8	2400	1
AX8-500	5	8	13-1/2	3300	1

BONDING JUMPER - 24"

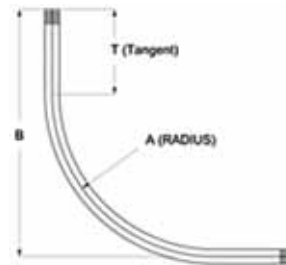
Part Number	Wt. Per 100	Ctn.	Std. Pkg.
BJ-0507-24	68	10	50
BJ-1012-24	91	5	25
BJ-1520-24	137	5	25
BJ-2530-24	188	2	10
BJ-3540-24	259	2	10
BJ-5060-24	376	-	5

GALVANIZED 90° SPECIAL RADIUS SWEEPS



File No. E226472

- Dimensional data is for reference only
- NPT thread with end-cap on each end
- Available in GRC, Aluminum, PVC Coated and Stainless Steel
- Galvanized Rigid Sweeps meet UL6 and ANSI C80.1
- Aluminum Rigid Sweeps meet UL6A and ANSI C80.5
- Stainless Steel Rigid Sweeps meet UL6A



A	12" RADIUS			15" RADIUS			18" RADIUS		
Size	B	T	Wt.	B	T	Wt.	B	T	Wt.
1/2	21	10	2.6	24	10	3.0	28	11	3.6
3/4	21	10	3.5	24	10	4.0	28	11	4.7
1	21	10	5.0	24	10	6.0	28	11	6.0
1-1/4	21	10	6.0	24	10	7.0	28	11	9.0
1-1/2	21	10	8.0	24	10	6.3	28	11	8.0
2	21	10	10.0	24	10	12.0	28	11	15.2
2-1/2	21	10	16.0	24	10	19.0	28	11	24.3
3	-	-	-	24	10	25.0	28	11	32.9
3-1/2	-	-	-	-	-	-	28	11	39.0
4	-	-	-	-	-	-	28	11	45.5

A	24" RADIUS			30" RADIUS			36" RADIUS		
Size	B	T	Wt.	B	T	Wt.	B	T	Wt.
1/2	35	11	4.1	41	11	4.9	47	11	5.5
3/4	35	11	5.5	41	11	6.5	47	11	7.3
1	35	11	8.0	41	11	9.0	47	11	10.0
1-1/4	35	11	11.0	41	11	12.0	47	11	14.0
1-1/2	35	11	7.7	41	11	9.6	47	11	11.0
2	35	11	17.5	41	11	21.0	47	11	23.3
2-1/2	35	11	28.0	41	11	33.6	47	11	37.3
3	35	11	38.0	41	11	45.6	47	11	50.7
3-1/2	35	11	45.0	41	11	54.0	47	11	60.0
4	35	11	52.5	41	11	63.0	47	11	70.0
5	-	-	-	41	11	84.0	47	11	93.3
6	-	-	-	-	-	-	48	12	123.3

A	42" RADIUS			48" RADIUS			60" RADIUS		
Size	B	T	Wt.	B	T	Wt.	B	T	Wt.
1/2	54	12	6.2	60	12	6.9	72	12	8.3
3/4	54	12	8.2	60	12	9.1	72	12	11.0
1	54	12	12.0	60	12	13.0	72	12	15.0
1-1/4	54	12	16.0	60	12	18.0	72	12	22.0
1-1/2	54	12	19.0	60	12	15.0	72	12	25.0
2	54	12	26.3	60	12	29.2	72	12	37.0
2-1/2	54	12	42.0	60	12	46.7	72	12	56.0
3	54	12	57.0	60	12	63.3	72	12	76.0
3-1/2	54	12	67.5	60	12	75.0	72	12	90.0
4	54	12	78.8	60	12	87.5	72	12	105.0
5	54	12	105.0	60	12	116.7	72	12	140.0
6	54	12	140.0	60	12	156.0	72	12	185.0

STEEL PIPE

Part Number Ordering Matrix Begins On Page 90

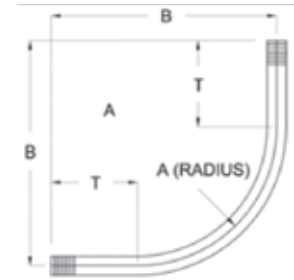
Please Note: Custom Radius are available on request.



File No. E226472

GALVANIZED RIGID FACTORY ELBOWS

- Dimensional data is for reference only
- NPT thread with end-cap on each end
- Available in GRC, Aluminum, PVC Coated and Stainless Steel
- Galvanized Rigid Elbows meet UL6 and ANSI C80.1
- Aluminum Rigid Elbows meet UL6A and ANSI C80.5
- Stainless Steel Rigid Elbows meet UL6A



90° ELBOWS

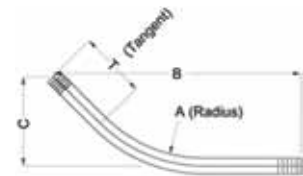
Description	Weight Each	Box Qty.	Dimensions A	Dimensions B	Dimensions T	Cut Length
1/2" X 90°	1.0	50	4.0	6.9	2.9	12.0
3/4" X 90°	1.3	50	4.5	7.4	2.9	12.9
1" X 90°	2.1	25	5.8	8.7	3.0	15.0
1-1/4" X 90°	3.4	20	7.3	10.6	3.3	18.0
1-1/2" X 90°	4.8	15	8.3	11.9	3.6	20.3
2" X 90°	7.3	10	9.5	13.8	4.3	23.4
2-1/2" X 90°	13.9	50	10.5	15.8	5.3	27.0
3" X 90°	21.3	35	13.0	18.8	5.8	32.0
3-1/2" X 90°	27.0	35	15.0	21.8	6.8	37.0
4" X 90°	36.8	35	16.0	23.1	7.1	39.3
5" X 90°	70.0	bulk	24.0	35.2	11.2	60.0
6" X 90°	111.8	bulk	30.0	42.6	12.6	72.3

Dimensions listed in inches unless otherwise noted.

45° ELBOWS

Description	Weight Each	Box Qty.	Dimensions A	Dimensions B	Dimensions C	Dimensions T	Cut Length
1/2" X 45°	0.7	50	4.0	7.0	2.9	1.9	8.0
3/4" X 45°	0.9	50	4.5	7.4	3.0	2.0	9.0
1" X 45°	1.6	25	5.8	9.5	4.0	2.7	10.0
1-1/4" X 45°	2.9	20	7.3	13.1	5.4	4.3	15.5
1-1/2" X 45°	3.8	15	8.3	14.0	5.8	4.3	16.5
2" X 45°	5.4	10	9.5	16.1	6.6	5.4	18.5
2-1/2" X 45°	10.8	50	10.5	19.0	7.9	6.8	22.5
3" X 45°	14.7	35	13.0	20.5	8.5	6.7	23.5
3-1/2" X 45°	19.5	35	15.0	22.8	9.5	7.1	26.0
4" X 45°	29.3	35	16.0	29.2	12.1	10.5	33.5
5" X 45°	50.2	bulk	24.0	36.1	15.0	11.2	43.0
6" X 45°	77.6	bulk	30.0	42.9	17.8	12.8	48.0

Dimensions listed in inches unless otherwise noted.



STEEL PIPE

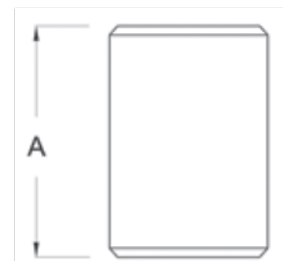
GALVANIZED RIGID COUPLINGS

- Dimensions listed in inches unless otherwise noted
- Couplings manufactured to UL specifications



File No. E226472

Size	Weight Each	Box Qty.	A Length
1/2"	0.12	100	1.63
3/4"	0.17	50	1.64
1"	0.29	30	1.97
1-1/4"	0.38	25	2.03
1-1/2"	0.53	25	2.06
2"	0.70	20	2.13
2-1/2"	1.80	24	2.19
3"	2.26	16	3.31
3-1/2"	3.50	12	3.41
4"	3.13	10	3.52
5"	4.75	5	3.95
6"	7.65	3	4.25

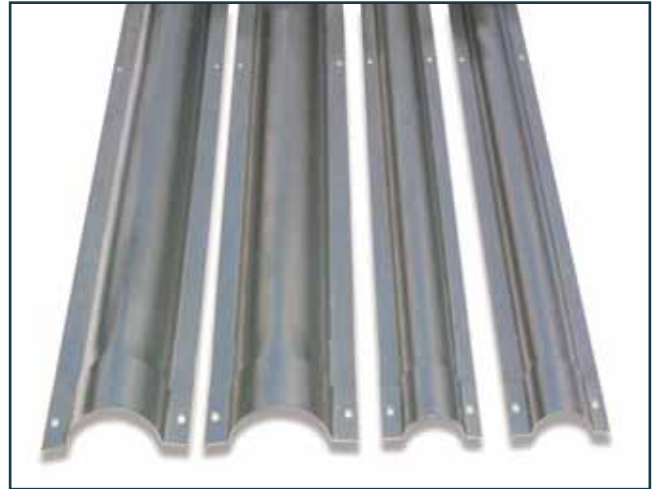


Part Number Ordering Matrix Begins On Page 90

SPLIT STEEL

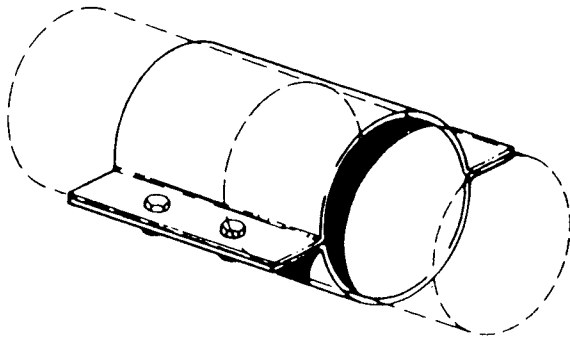
VIKIMATIC 14 GAUGE SPLIT STEEL

Split Steel Duct is available in 14 gauge galvanized steel, 10' length. This is a two piece, flanged trough, with belled ends. Each 10' length includes 10 sets of bolts, nuts and lock washers.



Description	Nominal		Length	Lbs./100'
	I.D.	O.D.		
2-1/2" 14 Ga. Galv. Steel	2.500	2.625	10'	275
4" 14 Ga. Galv. Steel	4.000	4.125	10'	430

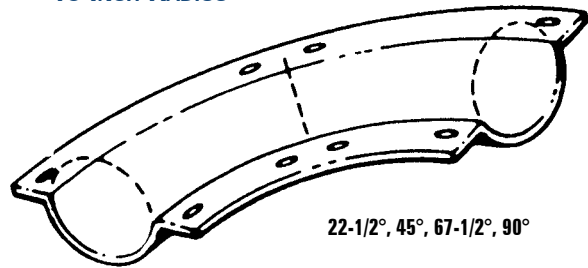
SPLIT STEEL



14 GAUGE SLEEVE COUPLING

Size	Description	Weight (2 pcs.)
2-1/2"	0.75 Galv. Steel	2.39
4"	0.75 Galv. Steel	3.76

18 INCH RADIUS



14 GAUGE ELBOW

Size	Description	Weight (2 pcs.)
2-1/2"	90° x 2'	8#
4"	90° x 2'	12#

Part Number Ordering Matrix Begins On Page 90

VIKIMATIC CUT STEEL

Each 10' length includes 2 piece coupling set, H-Strips and 4 sets of bolts, nuts and lock washers.

- H-Strips: Sch 40. 1/4" opening. 2 pieces per strip in 10' sections.
- All Hot Galvanized Steel
- Slotted Couplings make expansion joints and contraction is allowed for in each 10' section

CUT STEEL

Description	Nominal		Length	Lbs./100'
	I.D.	O.D.		
2-1/2" Sch. 40 Cut Steel	2.500	2.875	10'	600
4" Sch. 40 Cut Steel	4.000	4.500	10'	1,100
6" Sch. 40 Cut Steel	6.000	6.625	10'	1,900
2-1/2" Steel Coupling	2.875	3.250	5'	3.5 lbs. Ea
4" Steel Coupling	4.500	5.000	5'	5 lbs. Ea
6" Steel Coupling	6.625	7.187	5'	6 lbs. Ea

CUT STEEL BENDS

Size	Description
2-1/2"	11-1/4° x 3'
2-1/2"	22-1/2° x 3'
2-1/2"	45° x 3'
2-1/2"	90° x 3'
4"	11-1/4° x 3'
4"	22-1/2° x 3'
4"	45° x 3'
4"	90° x 3'

Each bend includes 1 coupling.



VIKIMATIC SPLIT HEAVY-WALL STEEL

- Available in Black Iron or Galvanized
- This is a staggered assembly, overlapping in the middle
- Each 10' length includes 23 sets of bolts, nuts, and lock washers
- Additional sizes available per customer's request
- Recommended for underground applications

Description	Nominal		Length	Lbs./100'
	I.D.	O.D.		
2-1/2" Heavy Wall	2.375	2.875	10'	741
4" Heavy Wall	3.875	4.500	10'	1572



SPLIT STEEL

Part Number Ordering Matrix Begins On Page 90